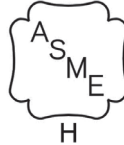




BAXI LUNA Duo-Tec 1.48 GA

BAXI LUNA Duo-Tec 1.48 GA Condensing Gas Fired Wall Mounted Boiler



Job Name	
Location	
Mechanical Contractor	
Architect/Engineer	
Wholesaler	
Model Number	
Gas Type	
NOTES:	

Built in Features:

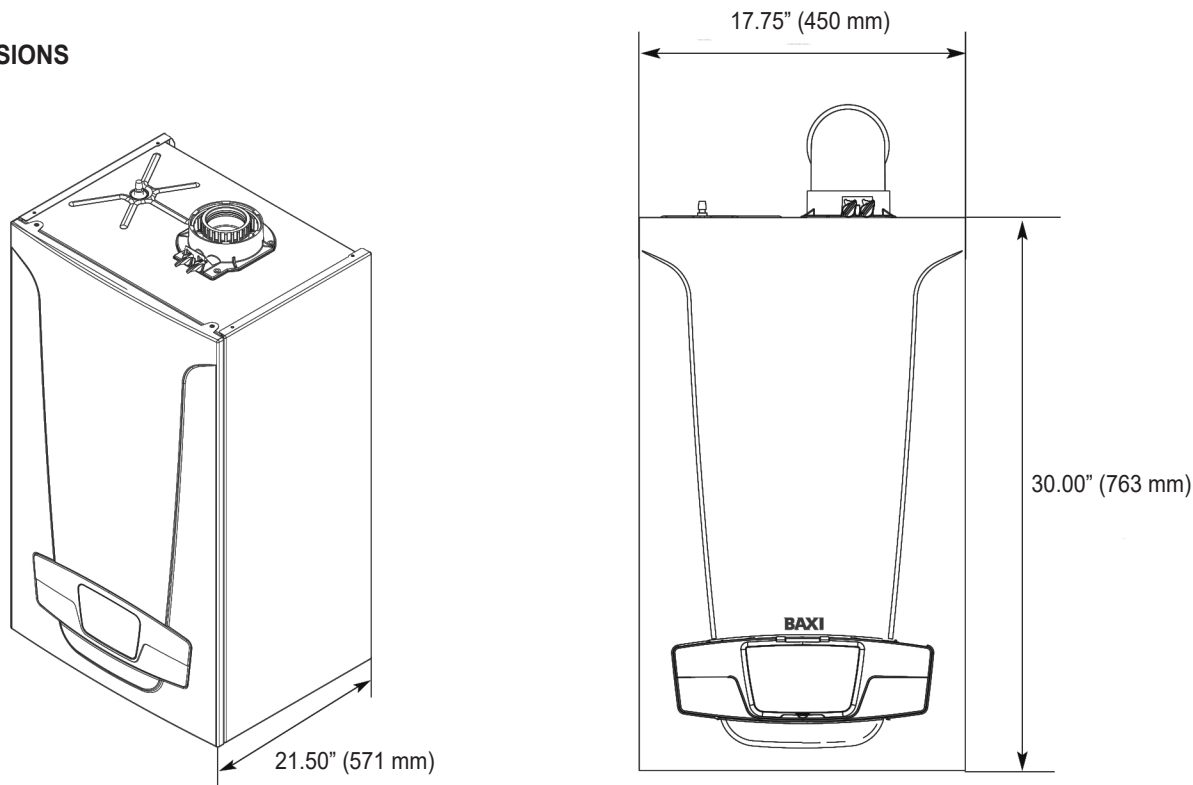
- Up to 95% AFUE
- Iron-Chromium stainless steel burner with superior resistance to high temperature scaling, embrittlement and loss of corrosion resistance
- Iron-Chromium stainless steel heat exchanger that resists corrosion and high temperature oxidation in burner and boiler applications
- Automatic burner setup to get highest efficiency
- Automatic air purge
- Electronic, direct spark gradual ignition with no standing pilot light.
- Field convertible from National gas to Propane with Gas recognition function
- Factory supplied horizontal coaxial termination and 90° elbow
- Differential pressure switch (low water cutoff)
- Domestic hot water priority (when optional indirect tank sensor is used)
- Heating supply temperature sensor
- 2 speed Boiler circulating pump (Grundfos)
- Pump seize protection
- 30 psi pressure relief valve
- Frost protection
- Heat exchanger thermo fuse

- Two stage flue temperature sensor
- Automatic self-diagnostics, featuring easy to view control panel with back-lit digital display that pinpoints operational and diagnostic status and facilitates troubleshooting.
- Legionella prevention function.
- All boiler piping connections are factory supplied union connections with shut off valves.

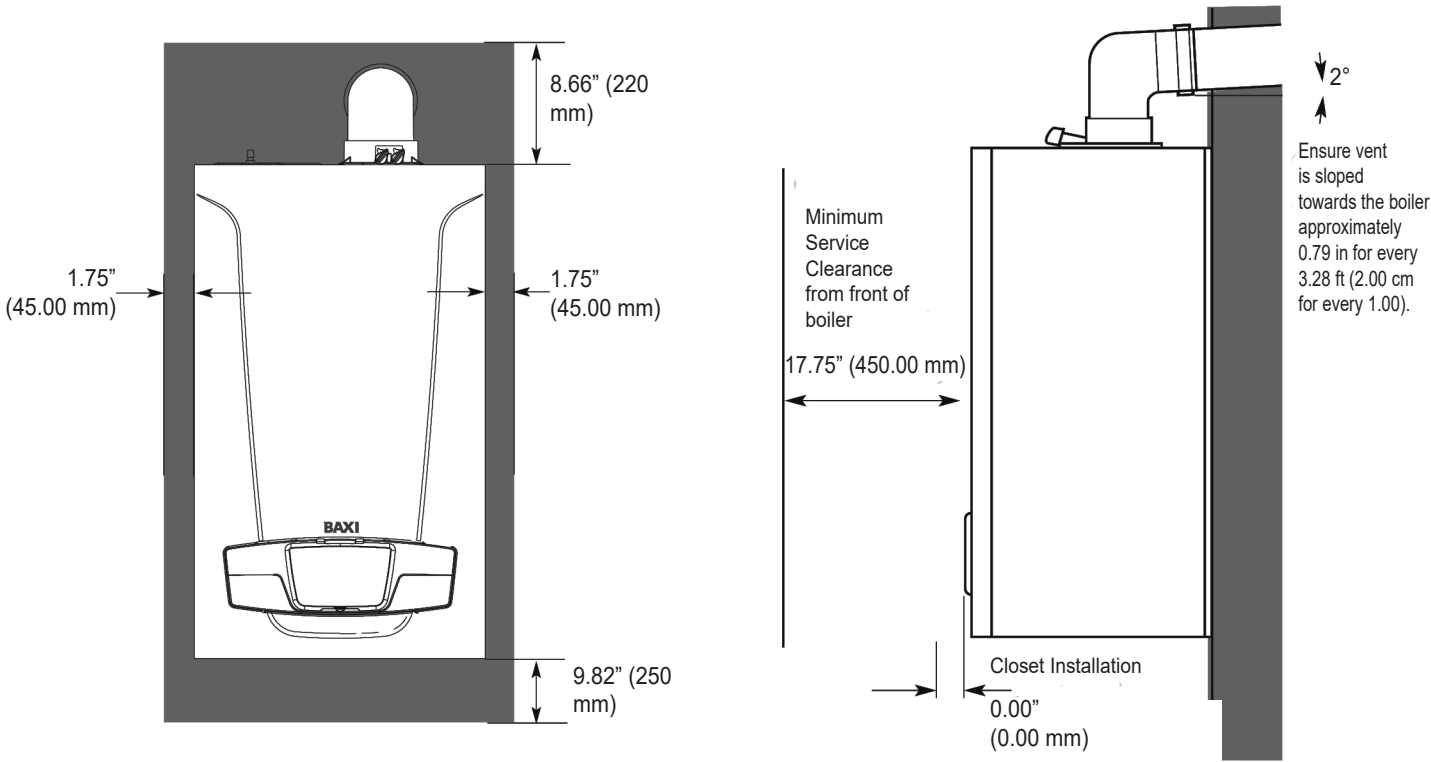
Optional Features:

- Baxi Room Unit Wi-fi thermostat
- Indirect Tank Sensor Kit
- Outdoor temperature sensor
- Coaxial to Dual flue venting system boiler adapter
- 0-10V input to manage heating set-point or heating power level

BOILER DIMENSIONS



CLEARANCES



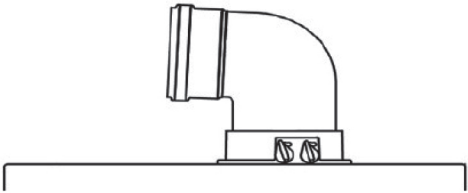
BAXI
Baxi N.A. 2201 Dwyer Avenue, Utica, NY 13501
Tel. 844 422 9462
www.baxiboilers.com

All specifications subject to change without notice.
©2019 Baxi N.A.
PN 240012507 Rev. B [07/30/2019]

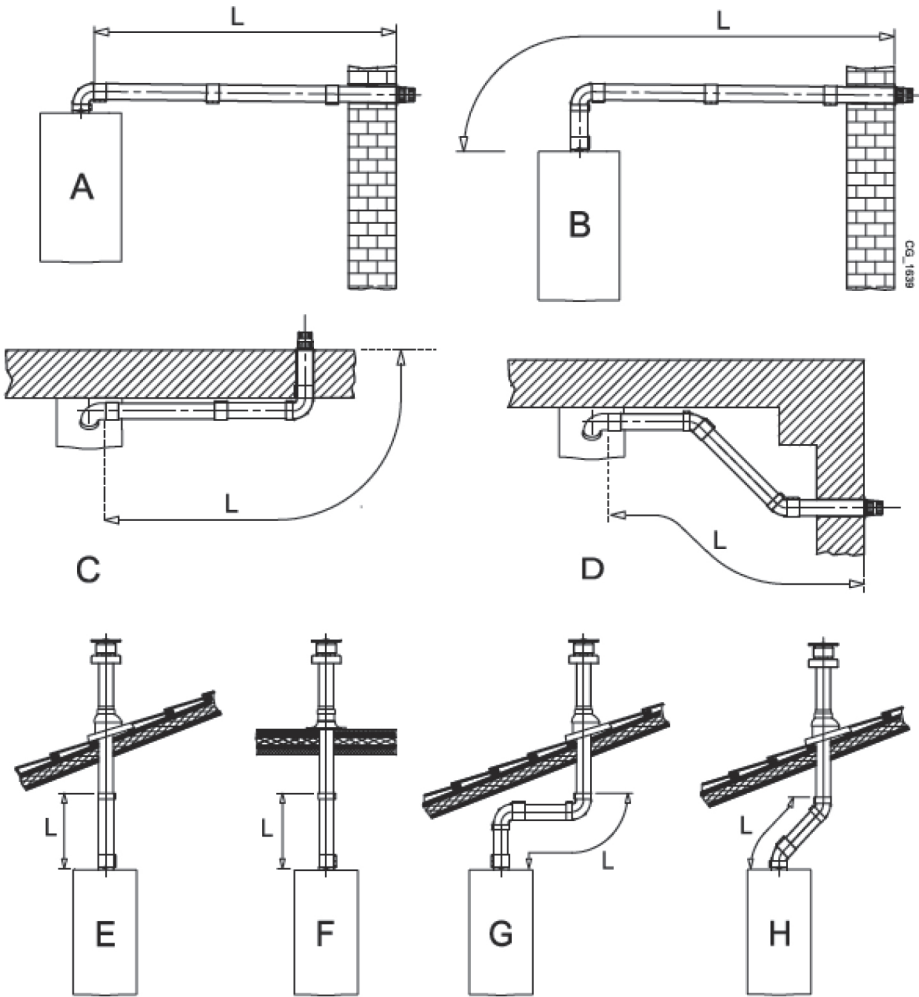
VENTING OPTIONS

Please refer to the installation manual section 4. VENT SYSTEM for more information.

Concentric Venting - Ø 125mm/80mm



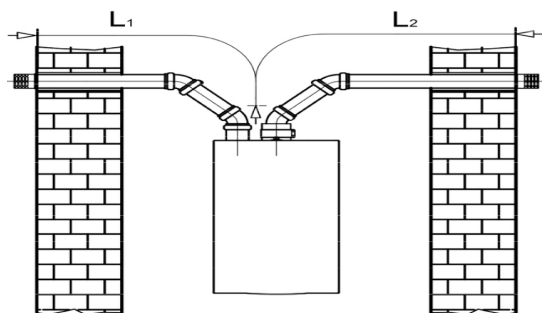
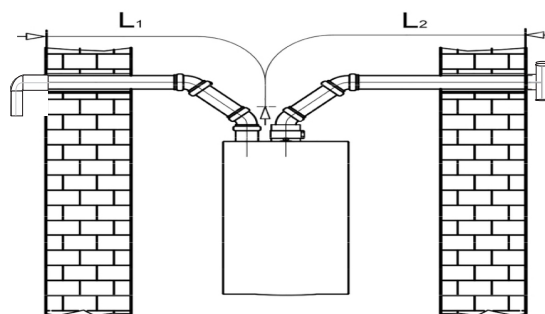
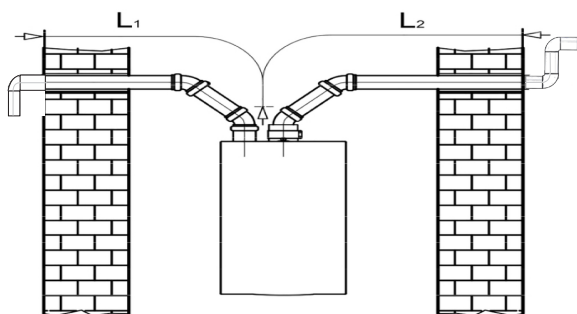
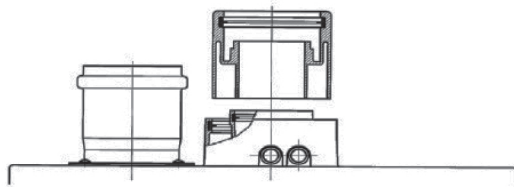
A B	Lmax = 32.80 / 10.00 mm - 80/125 mm
C D	Lmax = 29.52 / 9.00 mm - 80/125 mm
E F	Lmax = 32.80 / 10.00 mm - 80/125 mm
G	Lmax = 26.24 / 8.00 mm - 80/125 mm
H	Lmax = 29.52 / 9.00 mm - 80/125 mm



Baxi N.A. 2201 Dwyer Avenue, Utica, NY 13501
Tel. 844 422 9462
www.baxiboilers.com

All specifications subject to change without notice.
©2019 Baxi N.A.
PN 240012507 Rev. B [07/30/2019]

Dual Flue Venting - BAXI Polypro Venting Ø 80 mm or 3" CPVC S636



L1 MAX = 49.2 ft / 15.00 m
 L2 MAX = 147.6 ft./45.00 m
 L1 + L2 = 196.8 ft. / 60.00 m

BAXI

Baxi N.A. 2201 Dwyer Avenue, Utica, NY 13501
 Tel. 844 422 9462
 www.baxiboilers.com

All specifications subject to change without notice.
 ©2019 Baxi N.A.
 PN 240012507 Rev. B [07/30/2019]

Baxi Luna Duo Tec 1.48 GA			
Central Heating		MAX	MIN
Altitude (ft)	0-2000	2000-4500	-
Heat Input (BTUH)	164,000	147,000	29,500
Heat Output (BTUH)	153,000	137,000	23,000
CO ₂ Setting Natural Gas (%)	9.0	9.0	9.0
Gas Rate Natural Gas (ft ³ /h)	152.55	136.74	27.44
CO ₂ Setting LP Gas (%)	10.0	10.0	10.0
Gas Rate LP Gas (ft ³ /h)	65.6	58.8	11.8
CH Water Temp (°F)	176		
Supply Connection (inches)	1 NPT		
Return Connection (inches)	1 NPT		
Central Heating System			
Max. System Pressure (psi/bar)	30 / 2.11		
Min. System Pressure (psi/bar)	7.25 / 0.5		
Max. System Temperature (°F)	176		
Pressure Relief Setting (psi/bar)	30 / 2.11		
Recommended System Pressure Cold (psi/bar)	21.7 / 1.5		
Expansion Tank size (pre-charge pressure)	2.2 gal (US) at 11.6 psi		
Electrical			
Supply Voltage	120v 60Hz		
Power Consumption (Watts)	173		
Internal Fuse (Amps)	3.15		
General			
Gas Connection (inches)	3/4 NPT		
Lift Weight (lbs)	113		



Baxi N.A. 2201 Dwyer Avenue, Utica, NY 13501
 Tel. 844 422 9462
 www.baxiboilers.com

All specifications subject to change without notice.
 ©2019 Baxi N.A.
 PN 240012507 Rev. B [07/30/2019]



Baxi N.A. 2201 Dwyer Avenue, Utica, NY 13501
Tel. 844 422 9462
www.baxiboilers.com

All specifications subject to change without notice.
©2019 Baxi N.A.
PN 240012507 Rev. B [07/30/2019]